

FIRE-RESISTANT STEEL DOOR **EI60**

External door used mostly in industrial buildings, dwellings and office buildings, where fire resistance class of the door must be EI260.



Door features - outward opening

Width	max, mm	1264
Height	max, mm	2595
Fire resistance	EN 16034, class	EI60
Burglary resistance	EN 1627, class	¹ npd
Smoke tightness	EN 1634-3, class	Sa / S200
Sound insulation	EN ISO 717-1, dB	40
Water tightness	EN 1027, class	3A
Air permeability	EN 1026, class	4
U-value	EN 10077, W/(m ² K)	1.56
Wind resistance	EN 12211, class	C4
Corrosion resistance	EN ISO 6270-2, class	C3
Resistance to repeated opening and closing	EN 1191, class	C5

¹ no performance declared

² double-leafed door

³ optional



Finish

- Painted - RAL Classic and NCS color charts
- Stainless steel
- Laminated

[RAL Classic](#) >

[NCS Colors](#) >

Construction

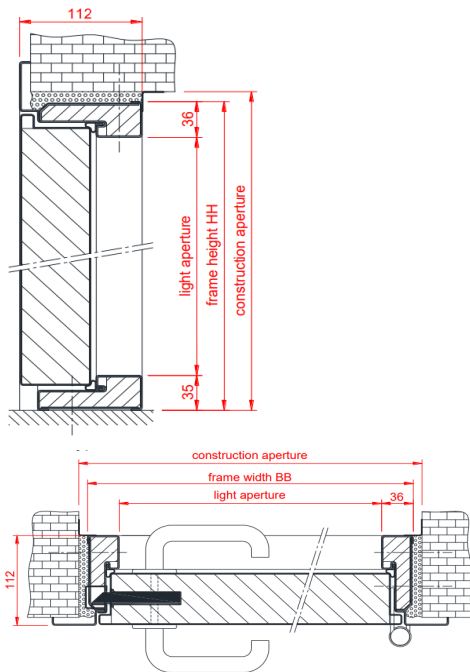
Door leaf thickness	64 mm
Door material	1 mm hot-dip galvanized steel
Door reinforcement	n/a
Door insulation	fire-resistant materials
Hinges	2 hinges with ball bearings
Frame material	1.5 mm hot-dip galvanized steel sheet
Frame insulation	fire-resistant mineral wool
Frame options	with cover slat (type YM); without cover slat (type YS)
Gasket	fire-resistant
Locks	must correspond to the criteria of the fire-resistant door

Accessories

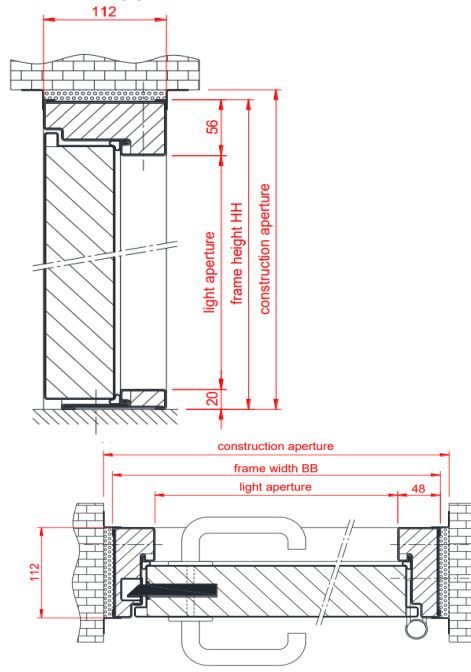
- Stainless steel threshold
- Hot-dip galvanized threshold
- Stainless steel kick plate
- Lock cases
- Door automatics
- Door handles
- Door pulls
- Security pins
- Stainless steel hinges
- Maintenance contract

Drawings

■ Frame type YM



■ Frame type YS



Contact sales for custom solutions and additional information

Contact >



Please find product certificates on our website

Certificates >



Please find installation and maintenance instructions on our website

Instructions >